



CONTEMPORARY

CUSTOM MILANO

TOTAL: 4071 ft²

				
3	3+1	option	2 c	option



TIMBERBLOCK

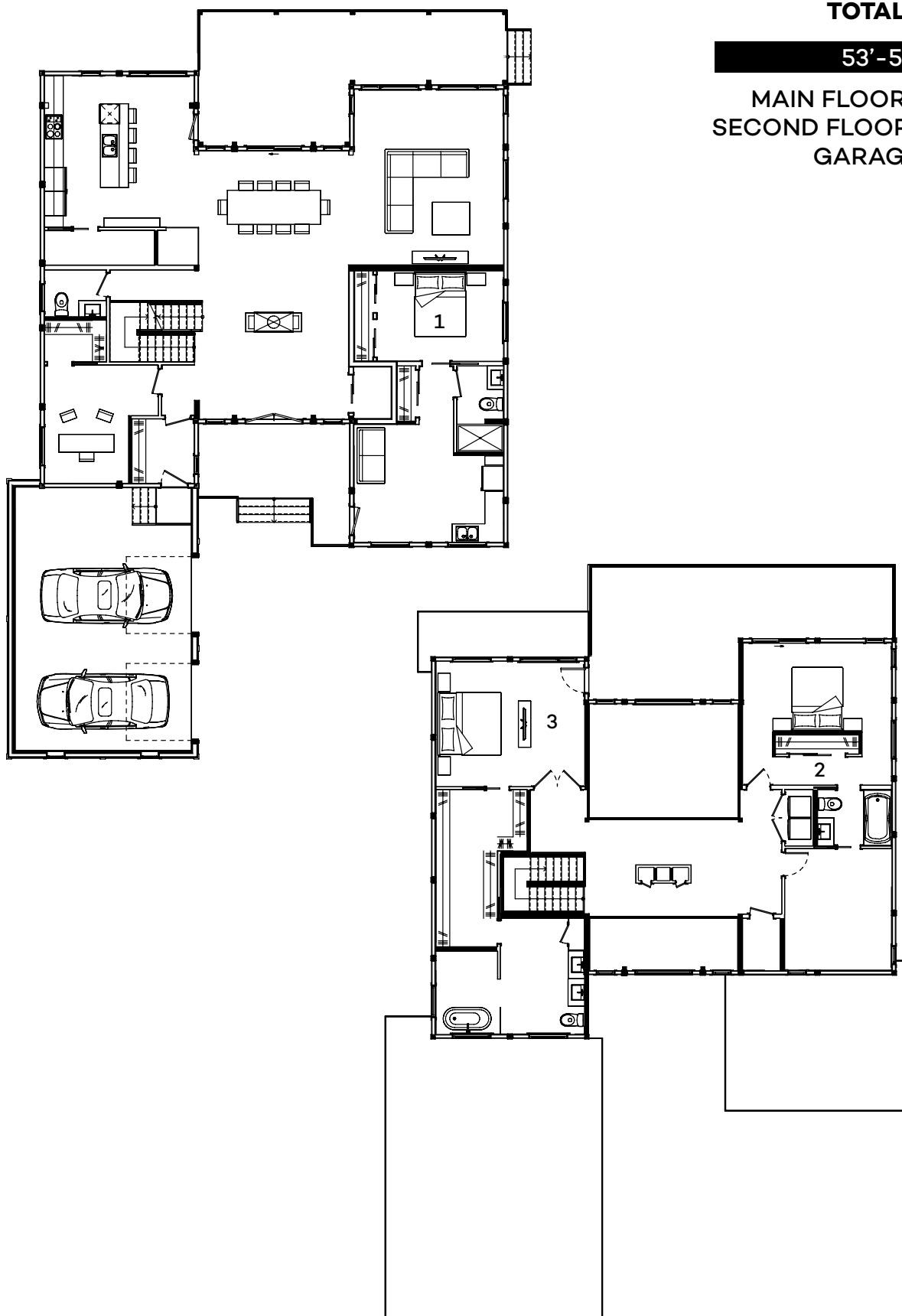
Engineered Homes for Better Living

THE TIMBER BLOCK SYSTEM, ITS COMPONENTS AND INTELLECTUAL PROPERTIES ARE PROTECTED BY INTERNATIONAL PATENT AND PATENTED PENDING LAWS.
©2021 Timber Block Inc. The illustrations can differ from the actual model. Architectural works relative to Timber Block homes are subject to international copyright law. The simple fact of using or copying the plans of Timber Block Inc/ Thermostruture inc. in whole or in part or to fabricate or build directly or indirectly a home based, in whole or in part, on plans, scale-models or model homes of the former, without the express consent of Thermostruture Inc. might constitute an infringement to international copyright laws. consent of Thermostruture Inc. might constitute an infringement to international copyright laws.

TOTAL: 4071 ft²

53'-5" X 73'-4"

MAIN FLOOR: 2063 ft²
SECOND FLOOR: 1424 ft²
GARAGE: 584 ft²



Dimensions may be subject to slight changes without notice. Please contact Sales for more information.



KITCHEN
16'-0" X 16'-3"

DINING ROOM
16'-1" X 17'-4"

LIVING ROOM
16'-0" X 18'-10"

PANTRY
11'-10" X 3'-8"

WINE CELLAR
4'-4" X 3'-8"

POWDER ROOM (1st)
6'-8" X 5'-0"

OFFICE (1st)
9'-0" X 12'-8"

WALK-IN (Office)
6'-8" X 4'-6"

MUDROOM
6'-8" X 6'-11"

BEDROOM # 1
13'-7" X 9'-8"

BATHROOM # 1
5'-0" X 9'-3"

SUITE KITCHEN &
LIVING SPACE
16'-0" X 12'-7"

BEDROOM # 2
16'-0" X 15'-4"

BATHROOM # 2
8'-0" X 6'-0"

STUDIO
11'-6" X 13'-1"

BEDROOM #3
16'-0" X 13'-6"

WALK-IN #3
6'-7" X 9'-10"

WALK-IN #3
6'-8" X 10'-4"

BATHROOM # 3
9'-0" X 12'-6"

WET ROOM # 3
6'-11" X 8'-11"